

SHADE
FABRICS

PLASTICS

PROMESH



protection®
Technical Fabrics

See all our products
www.protection.gr

PLASTICS

PVC-SHADE SAILS

PLASTIC TECHNICAL FABRICS

Protection technical fabrics company with the aim of meeting all client's needs continues to provide its customers a wide range of technical fabrics with PVC coating, pvc clear sheets, mesh coated fabrics and shade sails, made of excellent raw materials in accordance with the required European standards

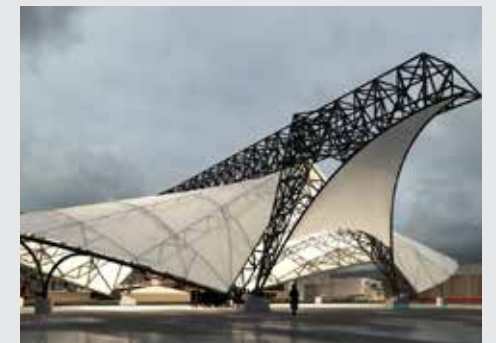
PROTECTION plastics:

- **100% waterproofed**
- Their **weave is strong** to resist in all weather conditions
- They are **UV resistant**, great to their fine coating treatment
- Their colors are non-toxic, and **stay vivid** for a long time
- They are produced **with anti- mildew materials** to be mold resistant
- They have high temperature resistance **-30 + 70°C**
- **Easy to weld** in high frequency welding machines, with perfect results for simple or special constructions
- **Great variety** in different colors and dimensions
- **Perfect** for various applications, like awnings, canopies, shade sails, beach chairs, cover boats and truck tarpaulins.

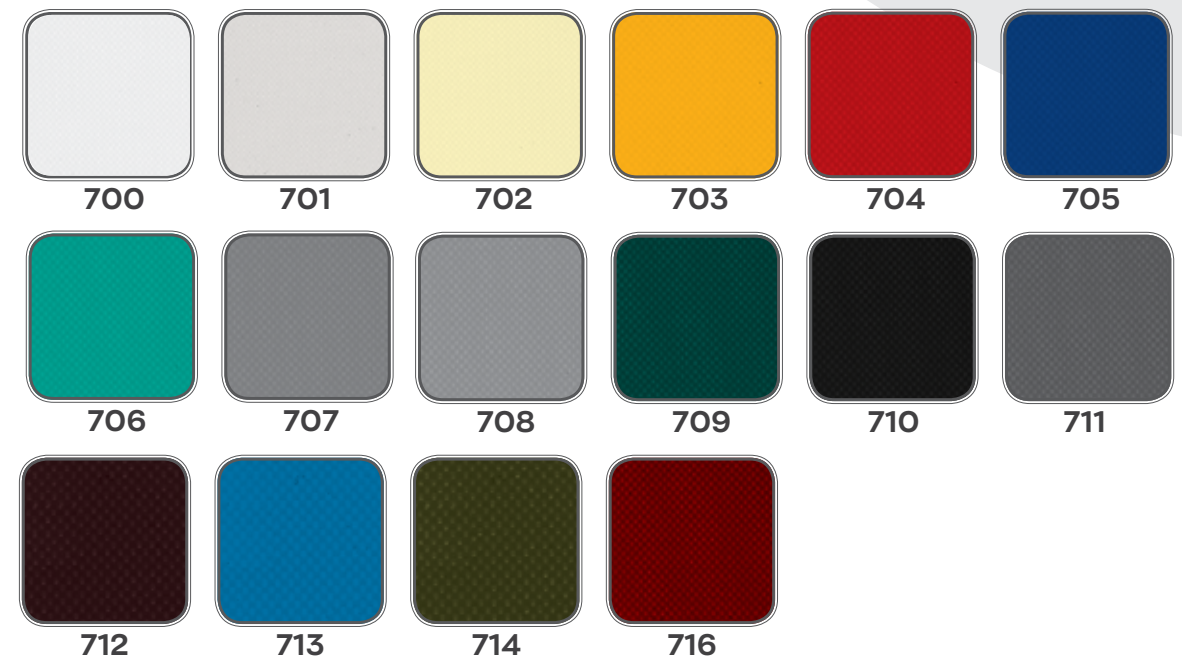
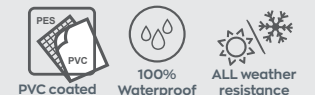


Proplast 650gr

- Weave: Polyester 100%, 1100 dtex
- Coating: PVC (knife coating)
- Surface treatment: glossy lacquered
- Width: 250-300cm
- Weight: 650gr/m²
- Thickness: 0,50-0,55mm
- Tensile strength according to test DIN 53354: 280 kg/5cm (Warp) - 252kg/5cm (Weft)
- Tear strength according to test DIN 53363: 58kg (Warp) - 43kg (Weft)
- Temperature resistance: -30 C +70 C
- Roll length: 30-50m
- Applications: awnings, tarpaulins, truck covers, tents, marine tops, outdoor structures
- Printable

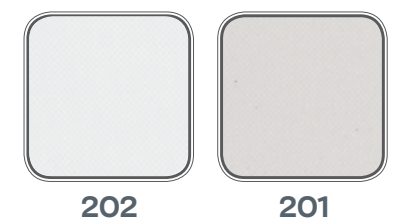


Results are typical, based on current production, and are subject to a +5 % tolerance.



Proplast 450gr

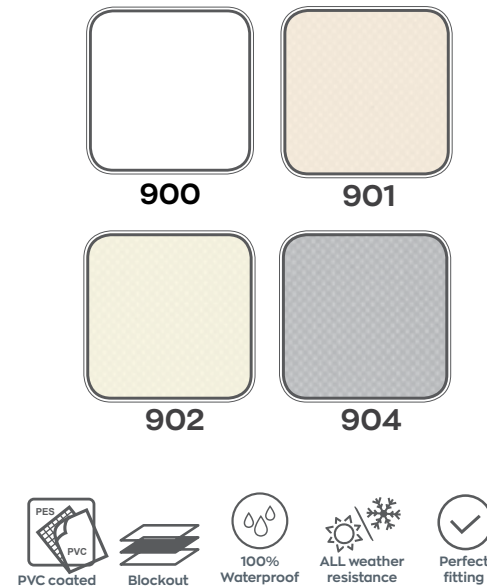
- Weave: polyester 100%, 500 dtex
- Coating: PVC knife coating
- Surface treatment: matt/glossy lacquered
- Thickness: 0,50mm • Weight: 450gr/m²
- Width: 160-300cm
- Tensile strength (Test DIN 53552): 183kg/5cm(warp)- 163kg/5cm(weft)
- Tear strength: (Test-DIN 53363):13kg (warp)-12kg (weft)
- Temperature resistance: -30°C+70°C • Roll length: 30- 50m
- Applications: fixed structures, gazebos, canopies



Proplast BLOCKOUT

- Base fabric: Polyester 100%, 1000 dtex
- Coating: PVC (knife coating)
- With blockout film (blocking the light)
- Surface treatment: 2 sided glossy lacquered
- Width: 250-300cm
- Weight: 750-860 gr/m2
- Tensile strength: 3000/2800 N/5cm (DIN 53354)
- Light fastness: >7 grade (DIN EN ISO 877)
- Tear strength: 440/400 N (DIN 53363)
- Temperature resistance: -30 C +70 C
- Flammability: B1 (DIN 4102)
- Roll length: 50m
- Applications: awnings, pergolas, roofing materials and other outdoor structures
- Printable

Results are typical, based on current production, and are subject to a +-5 % tolerance.



Proplast MESH

- ENG** | • Yarn: Polyester 100%
- Coating: PVC MESH
 - Width: 180cm
 - Weight: 470- 530 gr/m2
 - Break resistance, warp - weft: 1,192.30/ 1386,20 (N/2.54*20cm)
 - Air permeability: 6,716.20 L/m2/S
 - Temperature resistance: -20 C +70 C
 - Roll length: 50-65m
 - Applications: shading, beach chair construction



DOT P. Mesh
Ideal for digital printing and shading.

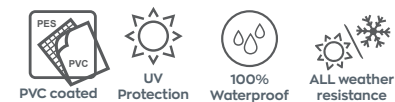
Width : 250cm
Weight 270gr/m2

Results are typical, based on current production, and are subject to a +-5 % tolerance.



Proplast ARMY 680gr

- According to army technical specifications
- Coating: PVC (knife coating)
 - Width: 250cm
 - Weight: 680gr/m2
 - Roll length: 50m



715



Results are typical, based on current production, and are subject to a +-5 % tolerance.

Proplast Super Clear

- Material: PVC
- Color: Transparent
 - Width: 0,80 - 1,00 - 1,37 - 1,60 - 1,70m
 - Weight: 700 - 1200 gr/m2
 - Thickness: 0,6 - 0,8 - 1,0mm
 - Tensile strength: 180kg/m2 (ASTM D 882)
 - Tear strength: 6kg/m6 (ASTM D 1004)
 - UV protection: 0,2phr
 - Temperature resistance: -30 +70 C
 - Roll length: 30-40m
 - Applications: gazebo curtains and manufacturing of false windows on all kinds of tents and structures, for succeeding weather protection and brightness simultaneously

Proplast Super Clear Window (Fire Retardant)

- Material: PVC
- Color: Transparent, SQUARED (24,1cm x 24,5cm)
 - Width: 1,32m
 - Weight: 618gr/m2
 - Thickness: 0,5mm
 - Tensile strength: 180kg/m2 (ASTM D 882)
 - Tear strength: 6kg/m6 (ASTM D 1004)
 - UV protection: 0,2phr
 - Temperature resistance: -30 +70 C
 - Flammability: B1 (DIN 4102)
 - Roll length: 30-50m
 - Applications: gazebo curtains and manufacturing of false windows on all kinds of tents and structures, for succeeding weather protection and brightness simultaneously

Japan Super Clear

- ENG** | • Material: PVC
- Width: 137cm & 183cm
 - Thickness : 0,50mm
 - Roll Length : 30m
 - Double polished for High transparency
 - Eco friendly stabilizers according to European REACH directive
 - Quick release
 - Uv resistant (blocks 90 % of harmful UV radiation)
 - Printable



800



801



802

ProMesh

ARCHITECTURAL S
SHADE SAILS



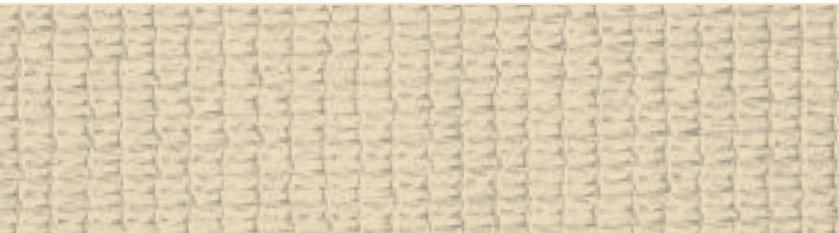
Results are typical, based on current production, and are subject to a +-5 % tolerance.

ProMesh is a high quality knitted shade fabric designed for tension structures, awnings, and shade covers, used on a wide variety of applications. ProMesh offers the ultimate combination of maximum sun protection, strength and durability to ensure maintenance-free long-life performance

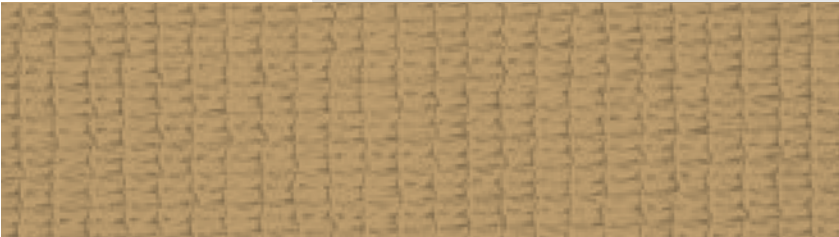
- Yarn : Polyethylene HDPE (UV stabilized)
- Strong HDPE for nor not absorbing moisture
- Weave: mesh (Monofilament and type yarn for OPTIMAL strength and UV BLOCK)
- Width: 300cm.
- Weight: 320-350gr/m2
- Thickness: 1,50 - 1,60mm
- UV Block range (UVA-UVB): 90-98% reduces sun exposure
- Tensile strength: warp 635N/50mm (AS 2001 .2.3.1) -weft 2494 N/50mm (AS 2001 .2.3.1)
- Elongation at break: -warp ca 95,6 % (AS 2001.2.3.2)-weft 70,4 % (AS 2001.2.3.2)
- Temperature resistance: -30°C +70°C
- Flammability index (range 0-100): 14
- Roll length: 40 - 50m
- 100% Recyclable
- Offers coolness and better air movement
- Order AT ANY SIZE DESIRED -with Inox accessories and strap reinforcement



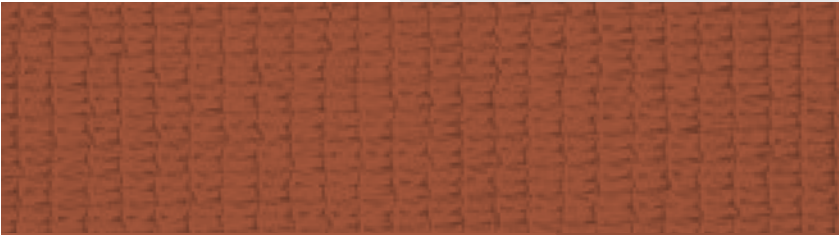
2039
COLORS
SNOW WHITE



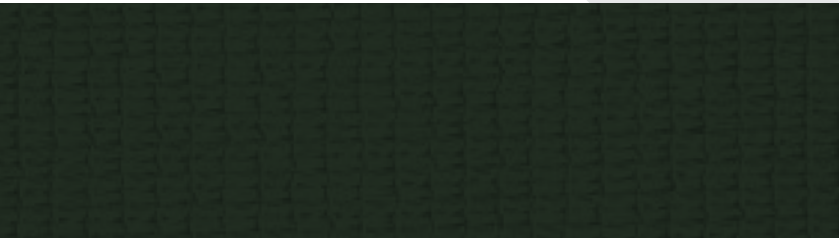
2034
COLORS
IVORY



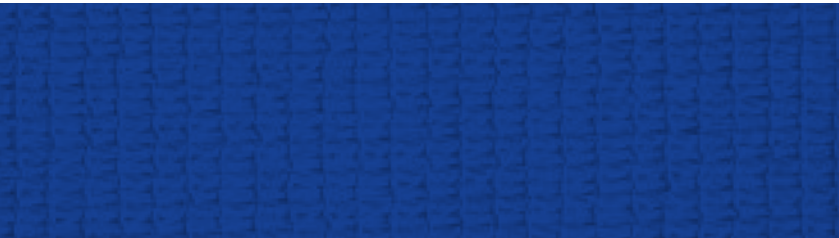
2031
COLORS
DESERT SAND



2035
COLORS
TERRACOTA



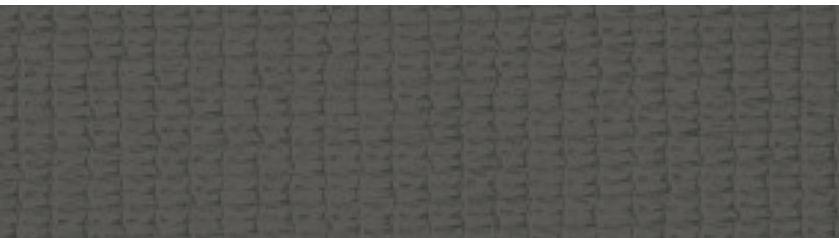
2036
COLORS
OLIVE GREEN



2032
COLORS
SKY BLUE



2037
COLORS
BLACK BEAUTY



2030
COLORS
INDUSTRIAL GREY



2038
COLORS
SILVER GREY



protection[®]
Technical Fabrics



100%
ΕΛΛΗΝΙΚΟ
ΠΡΟΪΟΝ

www.protection.gr